

Stirling Building

Information Update from University of Cambridge and Construction Partners, SDC

Dear Sidgwick site user and neighbours of the Stirling Project,

Welcome to the first newsletter of 2026, we are excited to update you on our progress as we ready ourselves to move out of the demolition phase and into the construction period, subject to final approvals.

We are now fully settled into our temporary accommodation and are beginning to feel at home on the Sidgwick site! The building hoarding, including informative graphics, has been installed and the temporary offices are now completed and ready to house our wider team and suppliers. We currently have approximately 10 full-time staff on site, along with additional visitors supporting the project.

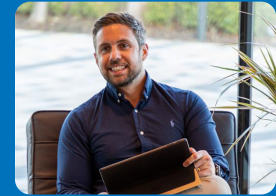
Construction sites require significant preparation before the construction phase begins. Over the coming months, we will be preparing the base of our tower crane, which is due to be erected in the spring. We will also continue to erect small areas of scaffolding for access to the building's extensive and complicated

façade. Additionally, roof works will progress to protect the building from weather damage throughout the project.

Internally, we are continuing with a careful programme of internal demolition work. This process aims to preserve the important historic features within the space, whilst addressing and removing the extensive asbestos. Concurrently, extensive surveys of the building are being conducted as the internal material is removed. These are used to inform the design team and ensure that their proposals fit.

What is more, our teams have been working closely with the University team to develop the design. An area of particular focus is the incredibly complex roof structure and glazing to the Seeley Library. Structural Engineers, Architects, Façade Engineers and Building Physicians have been collaborating to ensure that the roof retains its beauty but utilises modern-day technology and techniques to optimise its performance. Bringing this wealth of knowledge together has been

Contact Us



Tom Fenner
Project Director

@ Tom.Fenner@sdc.co.uk

07831 165880





Tom Kindred
Construction Manager

@ Tom.Kindred@sdc.co.uk

07825 363418

 sdc.co.uk

 @SDC Builders Ltd

 @sdcbuildersltd

a particular highlight in helping us to care for this spectacular, showpiece feature of the building.

We hope that the impact of our arrival on the Sidgwick site has been minimal and we sincerely thank you for your ongoing patience during this process. While we are used to working in similar environments, it is not lost on us that every project can present unexpected challenges. If any disruption has occurred, we apologise and thank you for your understanding. Please feel free to alert us of any improvements or suggestions you may have.

Importantly, our role is not only to improve the Stirling Building; we also want to contribute positively to the community. Therefore, as noted previously, we are keen to hear of any initiatives that we can participate in to support you. It is our intention to engage with local schools and groups and would be pleased to receive any suggestions you may have for how we can get involved.

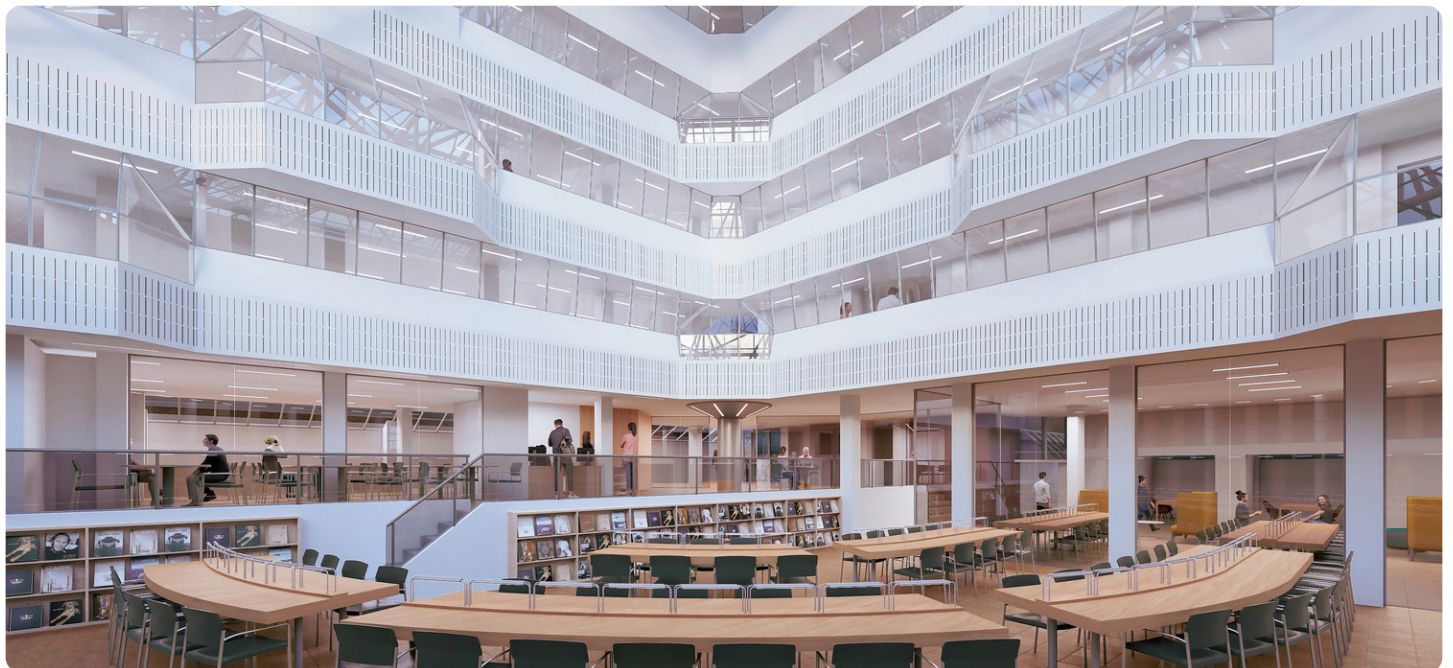
Always, we thank you for your ongoing support and wish you (belated as it may be) a Happy New Year.

With kind regards,

Tom Fenner
Project Director
SDC Builders Ltd

Progress at a Glance

- Still in the demolition and asbestos removal phase,
- Preparations underway for the main construction phase
- Design works being progressed for the Seeley Library roof
- Subject to University and planning approvals we are due to commence the main construction works in Spring 2026
- Feedback channels still open and being monitored



Internal render of Seeley Library