

# The New Micad Portal:

<https://portalcam.micadipr.net/>



Type the name of a building below

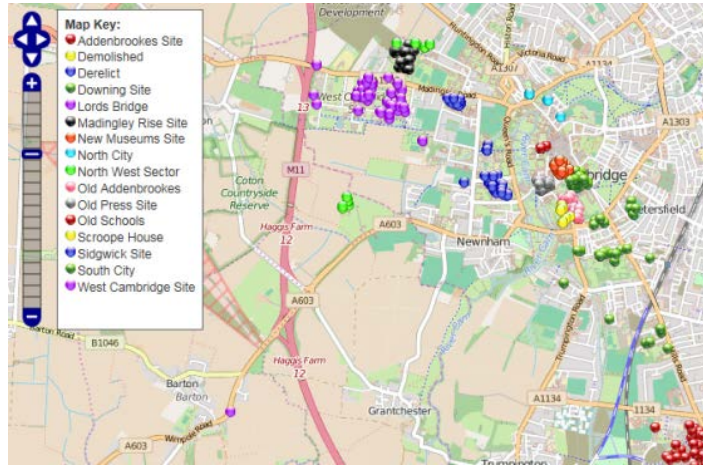
University of Cambridge\Operational Estate,01\Old Press...

You are signed in as: Alison Wallis  
[Sign out](#)



Map | CAD Drawings | **Documents** | Space Occupier | EstateTerrier

## Improved Map



## CAD Drawing Navigation

CAD Drawings for Kenmare House, B011

Select a floor

- Basement, B0
- Ground Floor, 00
- First Floor, 01
- Second Floor, 02
- Third Floor, 03

## See Building Data

Building information | Construction data | Legal tenure | Charges & values | Aquisitions & disposals | Planning constraints

|                                    |   |
|------------------------------------|---|
| Region                             | Operational Estate                          |
| Site                               | West Cambridge Site                         |
| Building                           | Whittle Laboratory                          |
| Address                            | 1 JJ Thomson Avenue<br>Cambridge<br>CB3 0DY |
| Function                           |   |
| Planning use class                 |   |
| Number of floors                   | 2   |
| Number of rooms                    | 70  |
| Net useable area (m <sup>2</sup> ) | 2674.26                                     |

## Easily find Documents with a filter

| Location   | Folder                 | Name / description  | File type | Discipline     | Publisher    | Date Published                    |
|--|------------------------|---|-----------|----------------|--------------|-----------------------------------|
| 17 Mill Lane   |                        |   |           | --Any--        |              | From (DD/MM/YYYY) To (DD/MM/YYYY) |
| 26 results found   |                        |   |           |                |              |                                   |
| \\Operational Estate,01\Old Press Site,B\17 Mill Lane,B031 | \Space Occupancy       | Space Change of Use<br>B031-02-0031 Seminar Room F.pdf                      |           | Space Planning | Dawn Birch   | 15 July 2014                      |
| \\Operational Estate,01\Old Press Site,B\17 Mill Lane,B031 | \Space Data Amendments | Space data amendments<br>B031 - Space Data Amendment Sheet - 08_12_2014.pdf |           | Space Survey   | Leigh Graves | 30 September 2015                 |
| \\Operational Estate,01\Old Press Site,B\17 Mill Lane,B031 | \Space Data Amendments | Space data amendments<br>B031 Space Data Amendment Sheet 30_09_2015.pdf     |           | Space Survey   | Leigh Graves | 30 September 2015                 |

## See Occupants and find all of their space

Occupants of Whittle Laboratory  
[Change view to see the spaces occupied by a single department](#)

| Floor        | Floor code | Room number  | Use  | Type  | School (Tier 1)   | Faculty (Tier 2)  |
|--------------|------------|--------------|--|---|---|---|
| Ground Floor | 00         | W017-00-0001 | Office<br><a href="#">View all on drawing</a>                            | Academic Units<br><a href="#">View all on drawing</a>         | School of Technology<br><a href="#">View all on drawing</a> | Faculty of Engineering<br><a href="#">View all on drawing</a> |
| Ground Floor | 00         | W017-00-0002 | Stairs/Stairwell<br><a href="#">View all on drawing</a>                  | Building Balance Space<br><a href="#">View all on drawing</a> |   |   |
| Ground Floor | 00         | W017-00-0003 | Ancillary Support Space - General<br><a href="#">View all on drawing</a> | Academic Units<br><a href="#">View all on drawing</a>         | School of Technology<br><a href="#">View all on drawing</a> | Faculty of Engineering<br><a href="#">View all on drawing</a> |