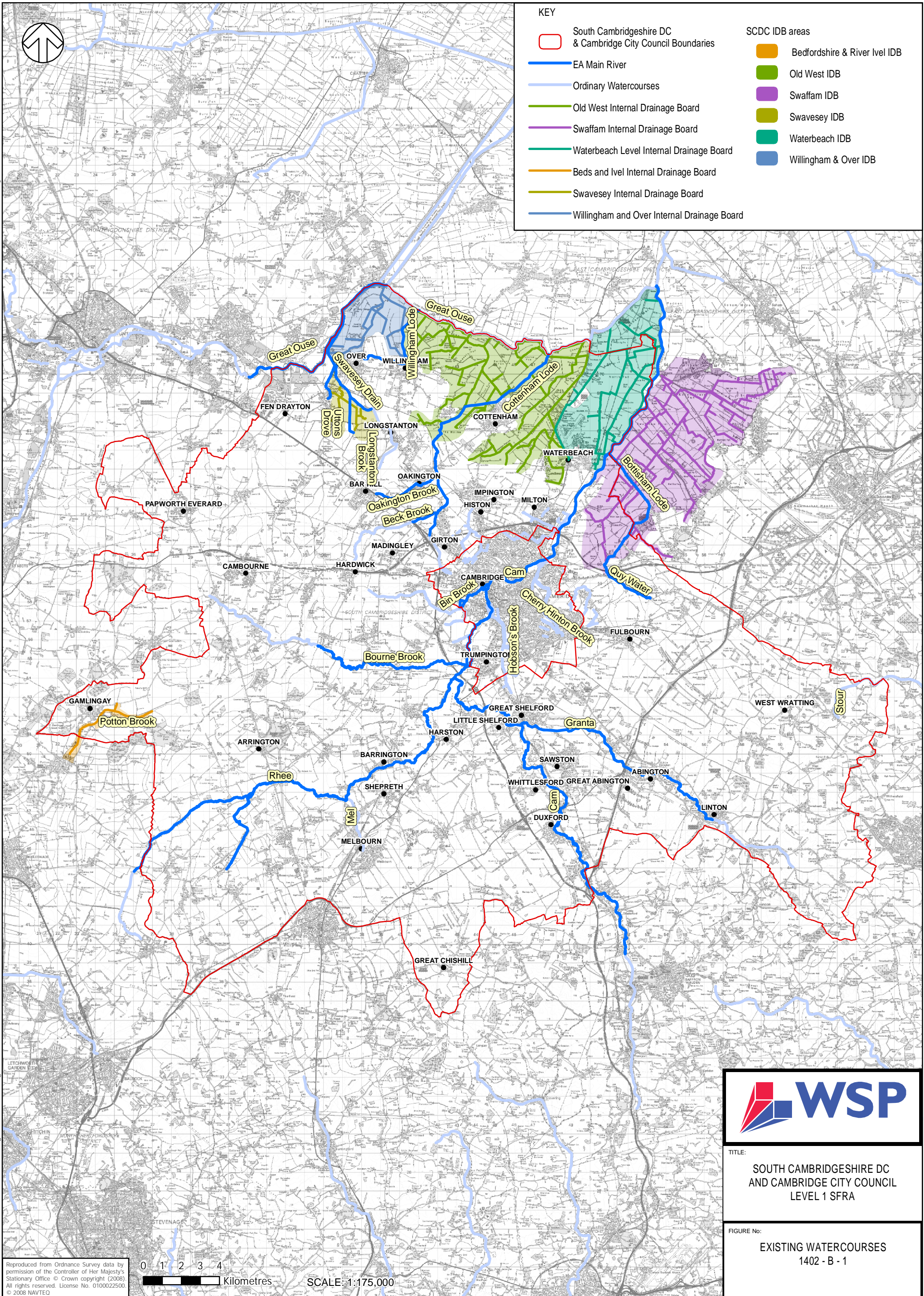
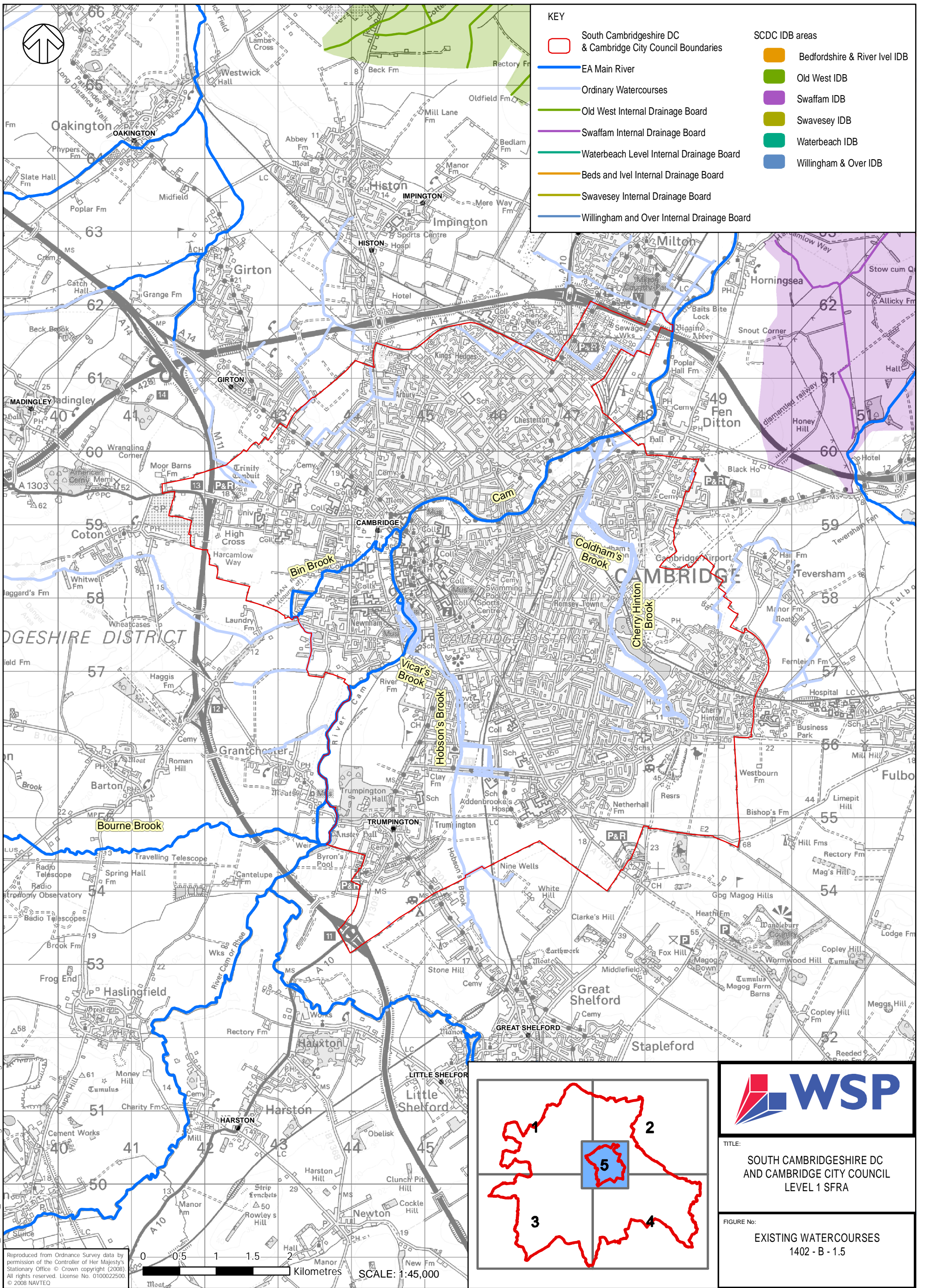


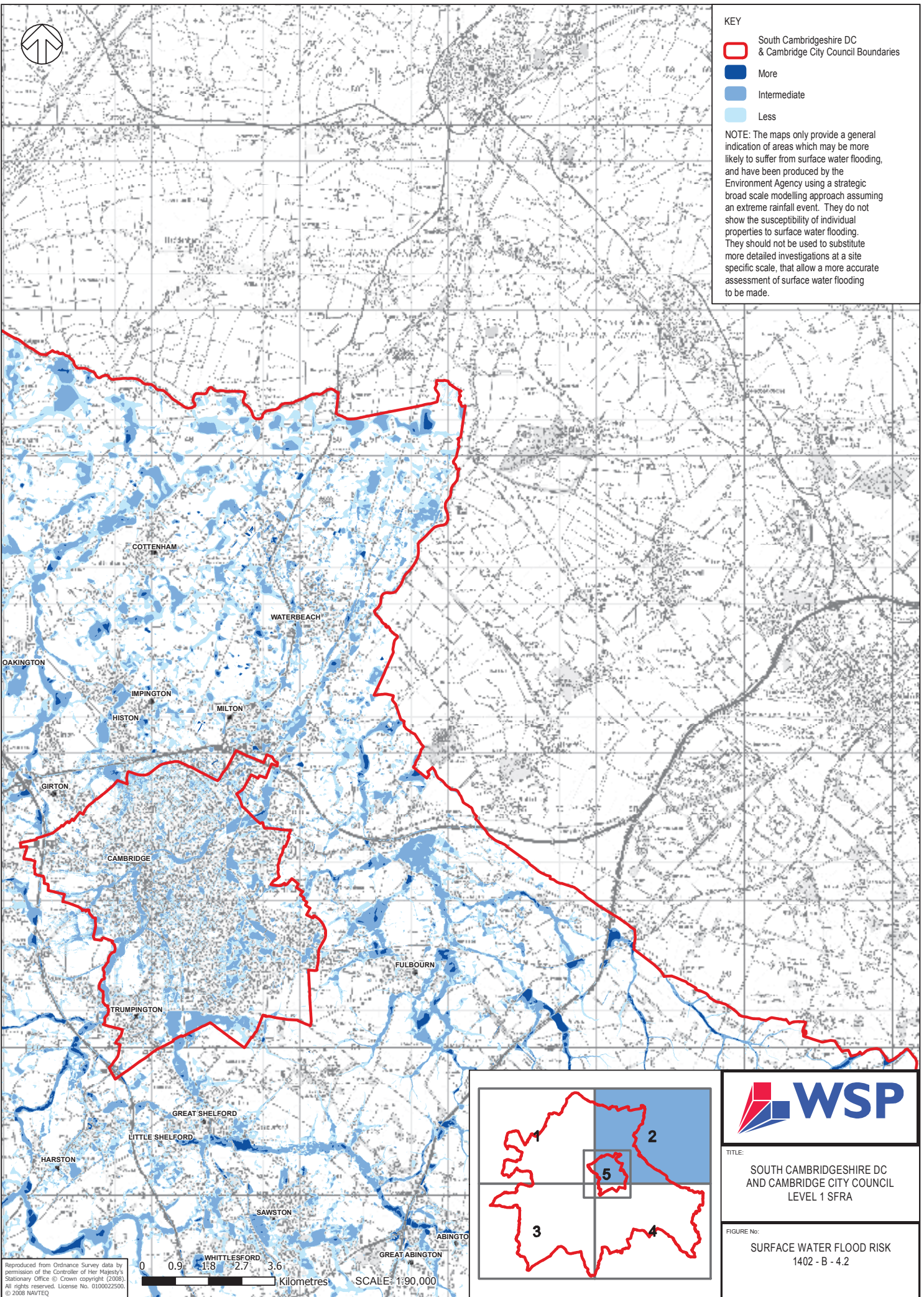
File: Q:\WSP\_UK\WSP\_D\Hertford\Cambridge\_SFRA\Cambridgeshire\_SFRA\_2\DRAWINGS\B1\_Watercourses.mxd Date Modified: 29/09/2010 Drawn By: ukdid001



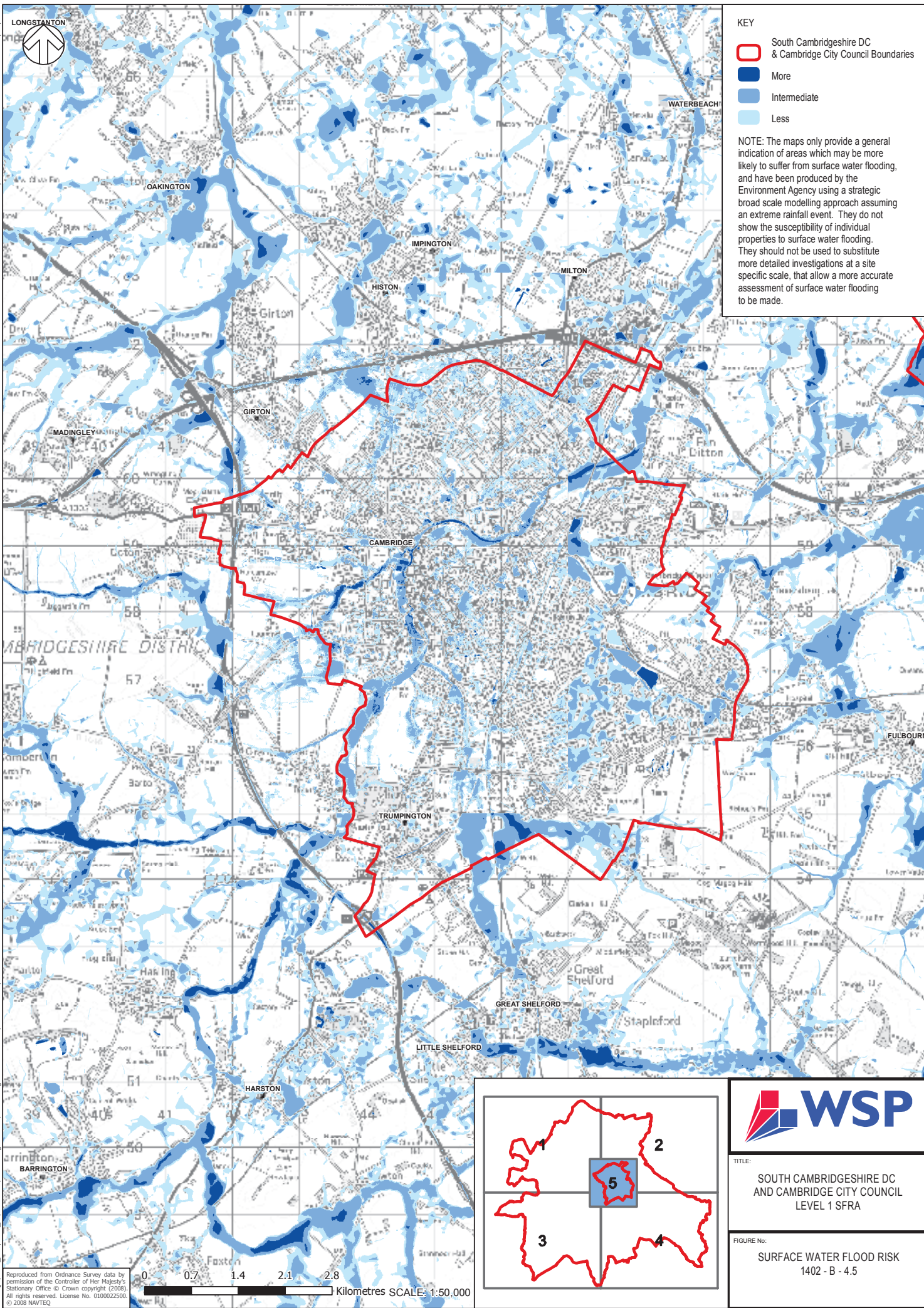








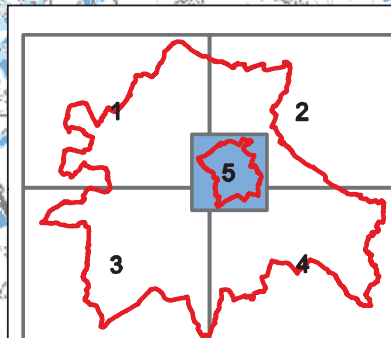





**KEY**

- South Cambridgeshire DC & Cambridge City Council Boundaries
- More
- Intermediate
- Less

**NOTE:** The maps only provide a general indication of areas which may be more likely to suffer from surface water flooding, and have been produced by the Environment Agency using a strategic broad scale modelling approach assuming an extreme rainfall event. They do not show the susceptibility of individual properties to surface water flooding. They should not be used to substitute more detailed investigations at a site specific scale, that allow a more accurate assessment of surface water flooding to be made.

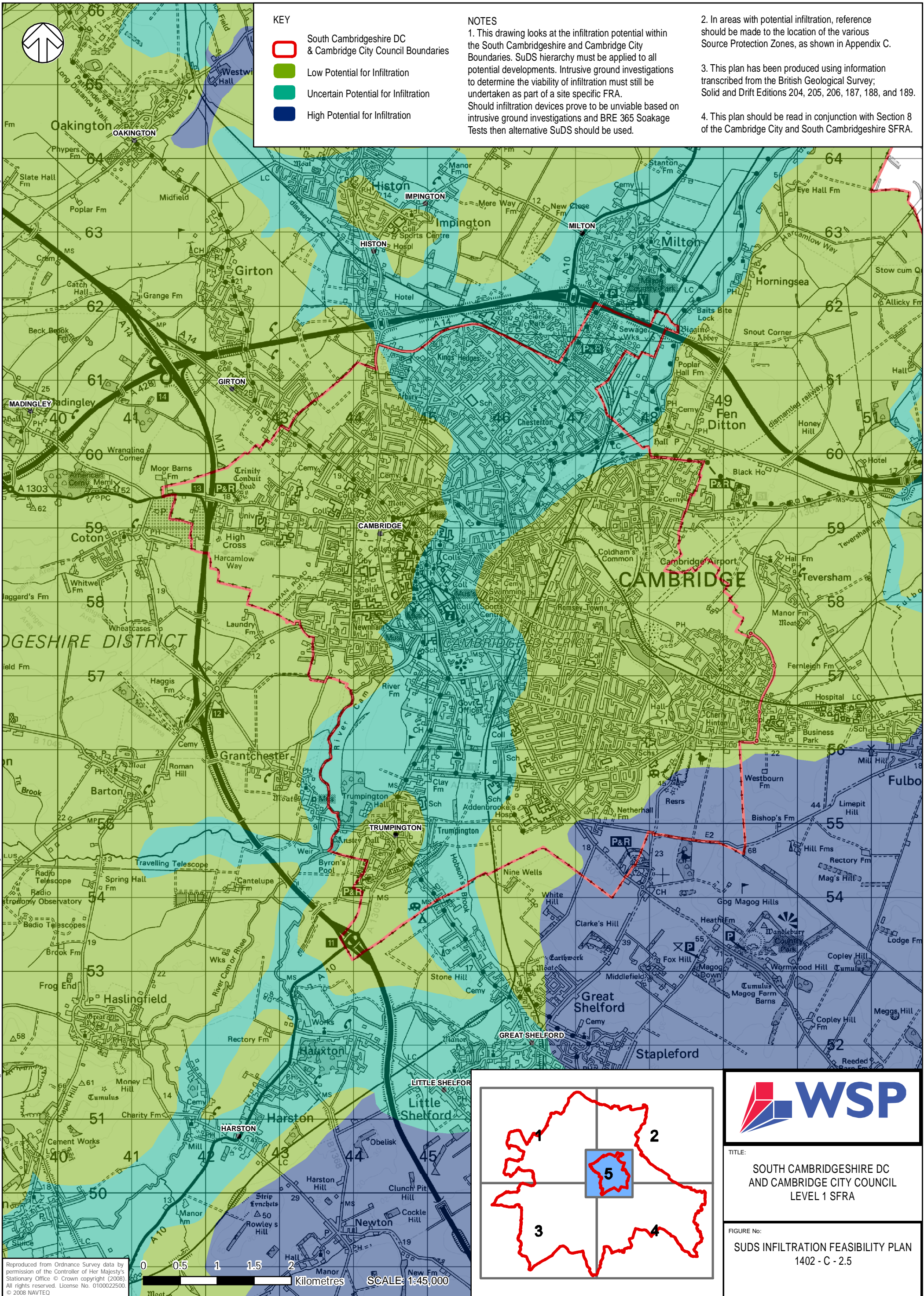




**TITLE:**  
SOUTH CAMBRIDGESHIRE DC  
AND CAMBRIDGE CITY COUNCIL  
LEVEL 1 SFRA

**FIGURE No:**  
SURFACE WATER FLOOD RISK  
1402 - B - 4.5







File: Q:\WSP\_UK\WSP\_D\Hertford\Cambridge SFRA\Cambridgeshire SFRA 2\DRAWINGS\1.5 Flood Zone Maps.mxd Date Modified: 23/09/2010 Drawn By: ukd001

